

Focus visit in the spring of 2015 was recommended:

### Governance

“continues to be a need for attention to the role of shared governance groups in planning, particularly with respect to administrative and budget/fiscal operations.”

### Assessment

“the institution is still not where it needs to be with respect to assessment in several areas of performance including student learning objectives.”

Focus visit required to:

### Governance

evaluate "the relationships and roles of faculty in shared institutional governance."

### Assessment

assure that "each graduate and undergraduate academic major and the general education program have assessment programs in place that include: 1) the skills and concepts to be mastered, 2) the assessment methods employed 3) the results of the assessment, and 4) how the assessment results are being used to improve each of the programs."

5.B. The institution's governance and administrative structures promote effective leadership and support collaborative processes that enable the institution to fulfill its mission.

2. The institution has and employs policies and procedures to engage its internal constituencies—including its governing board, administration, faculty, staff, and students—in the institution's governance.

3. Administration, faculty, staff, and students are involved in setting academic requirements, policy, and processes through effective structures for contribution and collaborative effort



:

Comprised of 104 members, are elected or selected by each constituency group.

Budget and Finance

Communications

Information Technology

Physical Environment

Public Affairs and Development

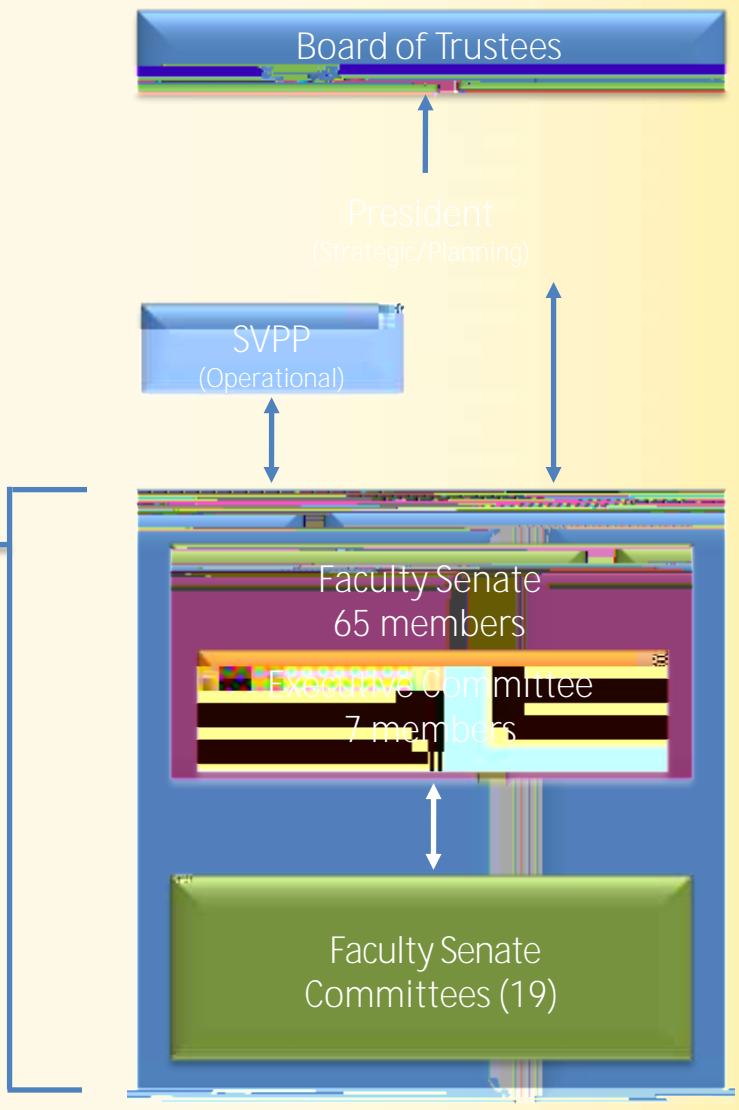
Recreation and Wellness

Student Engagement and Success

Talent Development and Human Resources



- Constituent Groups  
Represented on  
Faculty Senate
- College of Arts & Sciences
  - College of Applied Science & Tech
  - College of Business Admin
  - College of Education
  - College of Engineering
  - College of Health Professions
  - College of Polymer Science/Engrg
  - School of Law
  - University Libraries
  - Wayne College
  - Undergraduate Students
  - Graduate and Professional Students
  - Part-Time Faculty
  - Association of UA Retirees
  - Full-time Academic Advisors







Faculty Senate continues to perform its role in governance on academic matters in accordance with the bylaws enacted by the Board of Trustees.

University Council currently operates under a set of proposed bylaws that have not yet been approved by the Board of Trustees.

**Learning**

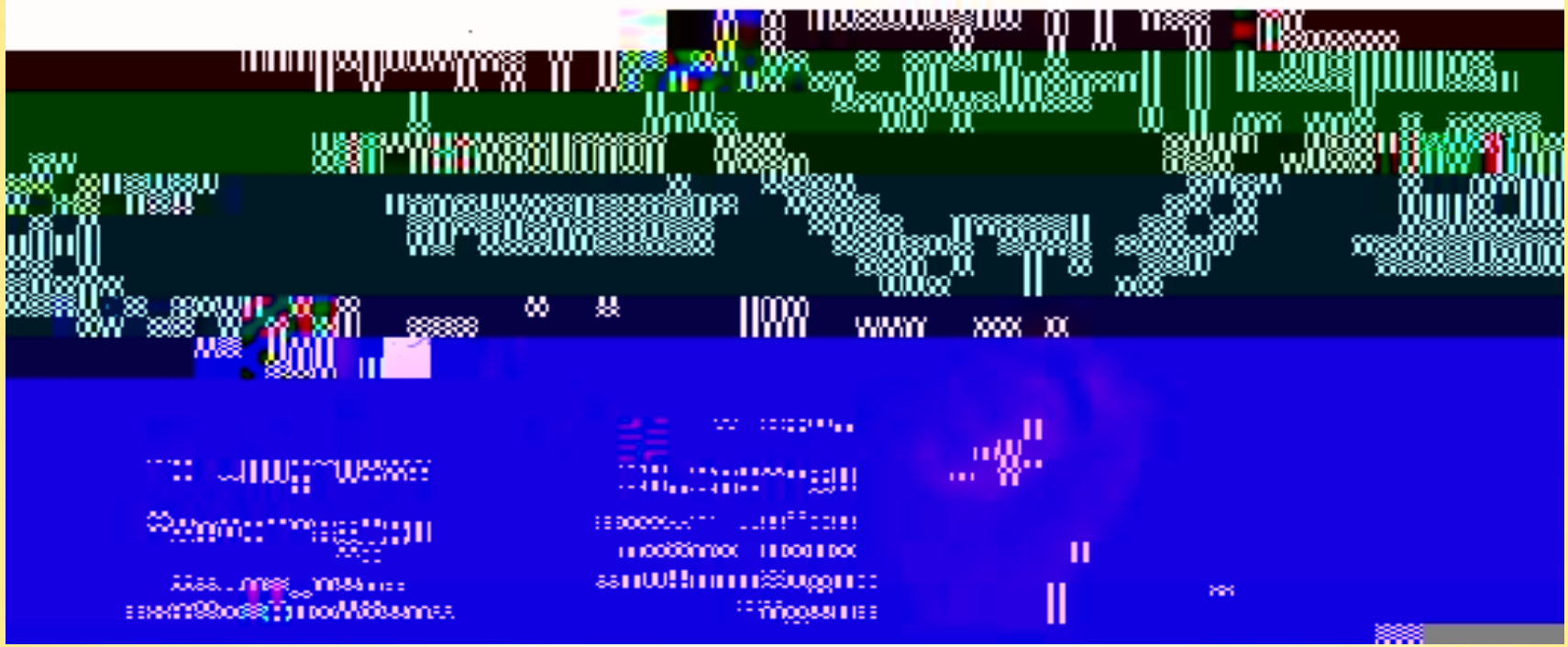
**Assessment**

Control



**Monitor Performance**

Were changes **all** **to** **the** **same** **direction**?



Summer/Fall 2013: CAS Assessment Committee formed

Assessment website established

Committee members work directly with CAS departments

Council of Deans and Provost briefed on assessment plan development

Assessment Plans reviewed and implemented by CAS

Spring/Summer 2014: University-wide assessment committee formed

Assessment committee co-chair works directly with departments outside of CAS

Assessment plans reviewed and implemented university-wide; units collect assessment data

Annual report template developed and distributed to all colleges

Fall 2014

Professional Development seminars conducted through Institute for Teaching and Learning (ITL)

September 15<sup>th</sup>: Annual assessment reports due for all programs

Review and feedback of reports in progress

October 9<sup>th</sup>: Draft learning outcomes and assessment report to Provost



September 2014

Task Committees with writing assignments

October 9, 2014

Assessment & Governance drafts due

October 13-27, 2014

Comment period (Campus & Consultant)

November 1, 2014

Finalize & submit to HLC

January 12, 2015

Public notice of site visit

February 16-17, 2015

HLC Site Visit

March 2015

Assessment consultant visit-TBD

